

Importing Data

Imports

DNAMatch use the iPad's file sharing mechanism for importing CVS data files. The Mail application uses attached CVS files in emails for importing into DNAMatch. Safari downloads CSV from the testing agencies web sites for importing into DNAMatch. Third party file sharing apps such as DropBox that support the iPad's sharing of files between apps can be used for importing data into DNAMatch4iPad.

File Sources

DNAMatch4iPad supports the autosomal match data generated by the *23ANDME Family Inheritance:Advanced tool* and *FTDNA Chromosome Browser* tool. If you have an account on DNAGEDCOM the corresponding files can also be imported.

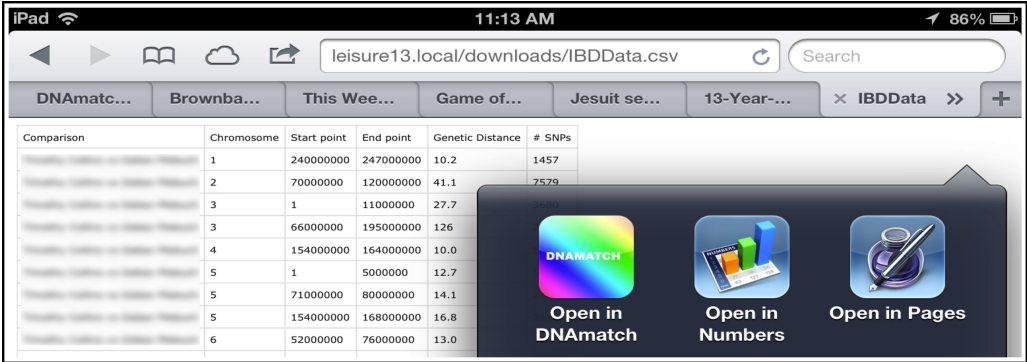
Importing Via Safari Download

To import a CSV match file in Safari, you must use Safari to login to your account and then navigate to the web site's page for generating download data. When you tap on the sites download link or button, the file will be downloaded and visible in the Safari browser.. When the file is fully loaded, tap near the top of the browser's window, but below the already visible tabs,

and a tool bar will appear with one or more buttons with 'Open in ...' messages. The tool bar should look like the following.



If the left most button is labeled 'Open in DNAmatch' then tap on it and DNAMatch will be launched. If it is not labeled so, then tap on the right most button. Tapping on the right most button will reveal a popup similar to the following image.



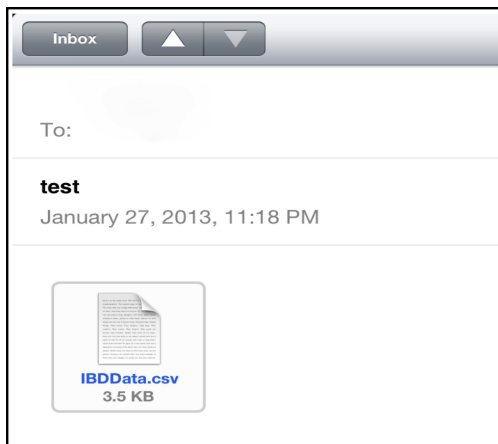
Tap on the 'Open in DNAmatch' button and DNAmatch4iPad will be launched. Once DNAmatch4iPad is launched, you will be presented with a popup screen and asked to identify the type of the file to be imported.

NOTE: The tool bar with the “OPEN IN” buttons only remains visible for a short period of time. If it disappears before you tap on an “OPEN IN” button, tap again near the top of the view per the previous instructions.

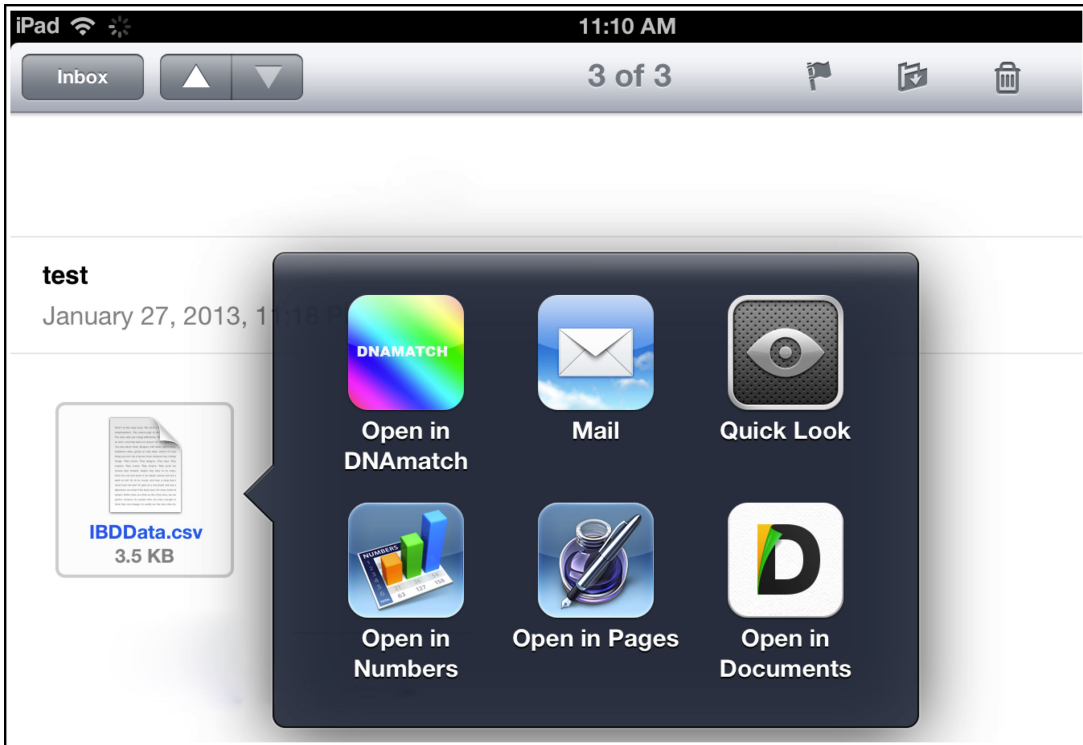
Importing Via Email Attachment

You can use your desktop email application to attach a match file that you have downloaded to your desktop. Attach the file to a message and email it to your iPad. Do not use tools such as Zip to compress your data file. You must email the original .CSV file.

When you open your email on your iPad and select the message with the attached data file you will see a graphic at the bottom of the message with the name of the attached file. The image that follows shows this.



Press and hold on the attachment graphic. This will launch a popup similar to the following figure.



Now tap the “Open in DNAmatch” button. This will launch DNAmatch4iPad. Once DNAmatch4iPad is launched, you will be presented with a popup screen and asked to identify the source of the file to be imported.

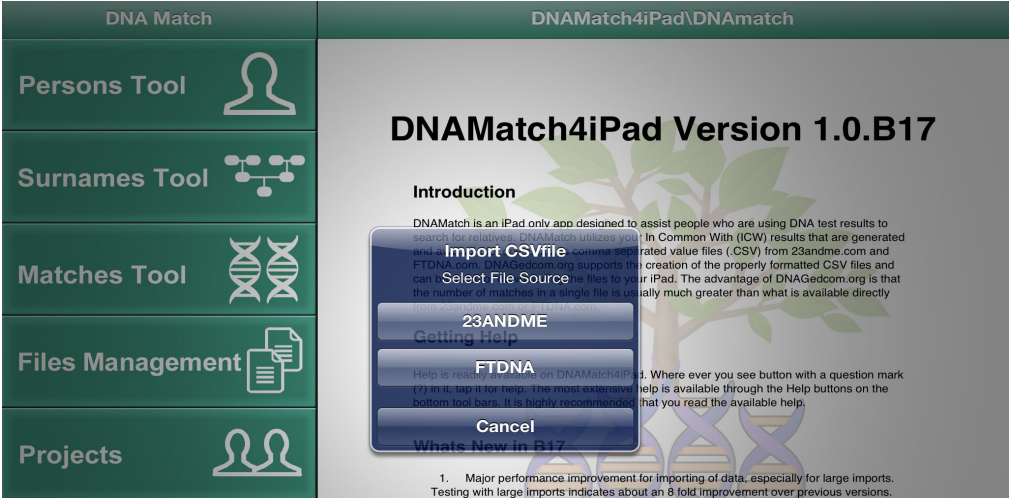
Importing with Dropbox

When using Dropbox to import your files follow these instructions.

1. Launch the Dropbox application.
2. Select the .CSV file in dropbox and the file will be opened in a Dropbox window.
3. Tap the right most icon on the Dropbox navigation bar and then tap the Open In... button.
4. In the Popup that appears tap on the Open in DNAMatch icon and DNAMatch4iPad will launch with the Import Files Menu asking you to select the import file source.

Selecting The File Source

When DNAMatch4iPad has completed launching you will be presented with a screen asking you to pick the testing agency source of the file. For DNAGEDCOM accounts, select the appropriate source. Tap on the button that matches the source of the file or tap the Cancel button if you do not wish to load the data.



Once you select the file source, the dialog will disappear and an activity indicator will appear over the left hand view indicating that DNAMatch4iPad is importing the data. **WARNING** – Very large data files can take a long time

to load. If the activity indicator is spinning this indicates that data is still being loaded. Be patient and wait for the data to finish loading.

When data importing has completed, you will be presented with an import statistics and error screen. Review any errors and tap the done button when you are ready to proceed.

Match Import Errors

Done

Import Statistics

File Name: Jim-5.csv

Date Created: Mon, May 13, 2013, 09:04:53

Source Type: T

Number of Lines: 927

Number of Errors: 0

ERRORS